

Application of heat patch detectors



1

Cows must be dry and be free of tail paint and "pour ons".

Warm up heat patch aids, body temperature is ideal.

Trim long hair to 1-2 cms if needed so detector does not shift.



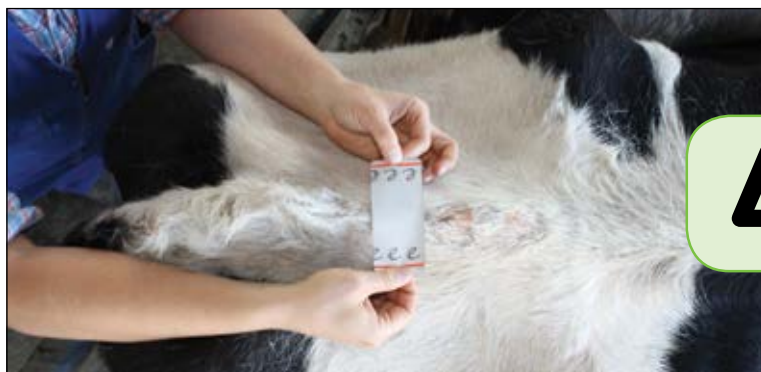
2

Remove loose dirt and hair from cows tailheads.



3

Use tack cloth to remove dust from cows.



4

Evenly apply heat patch across backbone in between hips and tail head.

Patch should be placed on smooth part of spine, not in a depression.

Always refer to manufacturer's instructions for unique application requirements. Use the recommended adhesive.